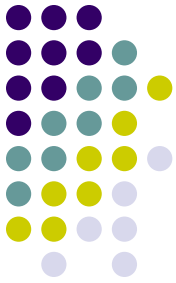


FARONICS
DEEP FREEZE™



The Deep Freeze Concept

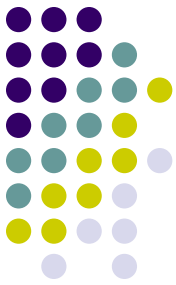
Absolute System Integrity

- Deep Freeze makes computer configurations indestructible
- Any changes made to a computer are wiped out at the end of the session
- Provides immunity from:
 - Accidental system misconfiguration
 - Malicious software activity
 - Incidental system degradation



What Is It?

- ❖ Kernel-level driver loads before Windows
- ❖ Not an imaging solution
- ❖ No backup or snapshot
- ❖ No duplication of data
- ❖ Unrestricted user environment
- ❖ Guaranteed not to interfere with applications



Deep Freeze Concept

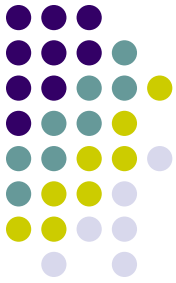
Absolute System Integrity

- Users still have full access to system software and settings while IT personnel are freed from tedious helpdesk requests
- Mapping allows users the ability to store their documents, pictures, music, etc.
- IT administrators can easily create automated update and maintenance periods



Balanced Security

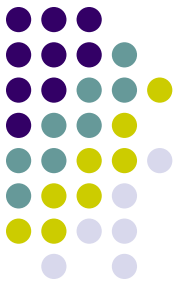
- ❖ Mapping user and application data to a Thawed (unprotected) partition or drive allows data to be retained
- ❖ Users can store and access their documents, pictures, music, etc., while still enjoying the total system consistency that Deep Freeze offers



Deep Freeze Value Proposition

- Users can trust that computers are free from malicious software and that personal information is never retained
- Deep Freeze offers IT the ability to secure a workstation with total resiliency while still enabling users to save their work
- IT personnel don't need to worry about desktop computers becoming congested with temporary files and corrupted data
- IT personnel do not have to constantly reimage damaged workstations
- Computing environments become easier to manage
- Deep Freeze's system protection works with both stand alone and networked computers
- IT personnel are freed from having to deal with tedious helpdesk requests





Deep Freeze Explained by Customers

"I have had teachers near retirement tell me they were ready to call it quits because of erratic and inconsistent computer software. Not until after last summer when Deep Freeze was installed did they finally remember why they liked to teach. Computer issues sometimes used as much as 20 minutes of a teacher's 45 minute period before Deep Freeze was deployed."

- *Chuck Taylor, San Juan Unified School District, CA*



Business vs. School

In the education world, when a computer crashes...

- the teacher goes back to teaching "the old fashioned way"
- OR**
- the students are expected to "double up" on computers that are still working

How do we calculate what is lost in the process?

How can teachers integrate technology into the classroom if they don't have any confidence in it?



Deep Freeze Explained by Customers

"Most people only respond when they are unhappy with a particular product. I thought I would take the time and say thank you for such wonderful software such as Deep Freeze Enterprise. I have been using the software for about a year and a half now and on the one hundred something computers it is installed on, not one has a single virus or spyware problem. Thank you for all the time you have saved me."

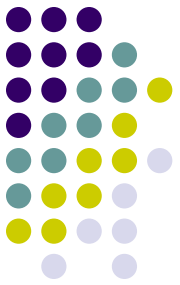
- Daniel Harrison, Williamson County Library, TN

Patron Privacy

Every FedEx Kinko's nation-wide uses Deep Freeze, partly to ensure patron privacy by providing every patron with an absolutely 'fresh' computer.

This is something that is unique to Deep Freeze and cannot be replicated by running scripts deleting temp, clearing history files or restricting the patron with group policy-like solutions.



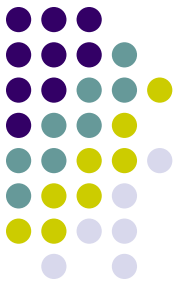


Deep Freeze Is Versatile

Usage Scenarios

- ❖ Computer & Training Labs
 - ❖ Library Computers
 - ❖ Kiosk & Shared Access
 - ❖ Visitor's Center
 - ❖ Community Club Computers
 - ❖ Hotel/Resort Computers
 - ❖ Notebooks on Loan
 - ❖ "Set them and forget them"
Production Computers
 - ❖ Employee computers where
everything is saved to the network
- ❖ Faculty & Staff Computers
 - ❖ 1 to 1 Notebook Deployments
 - ❖ Servers!
 - ❖ Dedicated Server Versions for Windows 2000 & Windows 2003 Server Operating Systems





Deep Freeze Editions



- **Windows 9x/2000/XP/Vista & 2000/2003/2008 Servers**
- For Workstations and Servers



Mac OS X 10.3, 10.4, and 10.5

- Supports both PPC & Intel based Macs
- Management via Apple Remote Desktop



Novell SLED

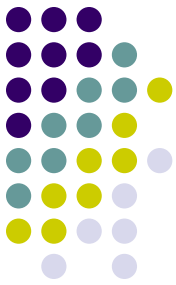
- Supports latest version of Novell's SUSE

Enterprise Control

Deep Freeze can be controlled by any desktop management utility that can run script files

Also integrates with solutions such as:

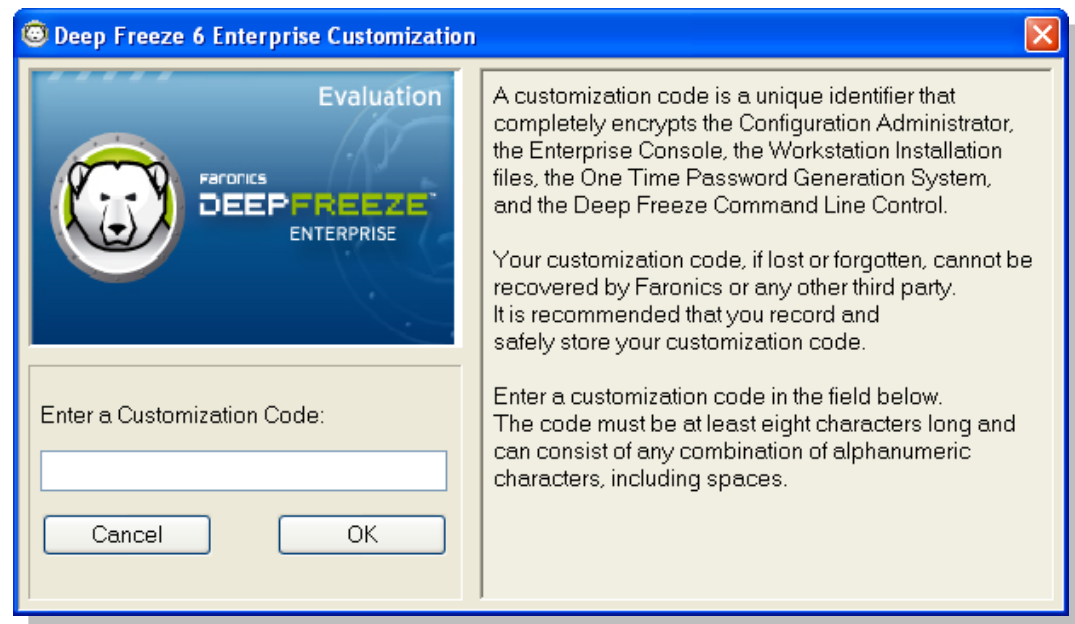
- Apple Remote Desktop
- LANDesk
- Novell ConsoleOne
- Microsoft SMS
- Altiris
- BigFix
- Symantec Ghost



Customization Code

Using the same Customization Code throughout the entire organization can centralize the configuration and deployment of Deep Freeze. The Customization Code is a unique identifier that completely encrypts all the Deep Freeze components, such as:

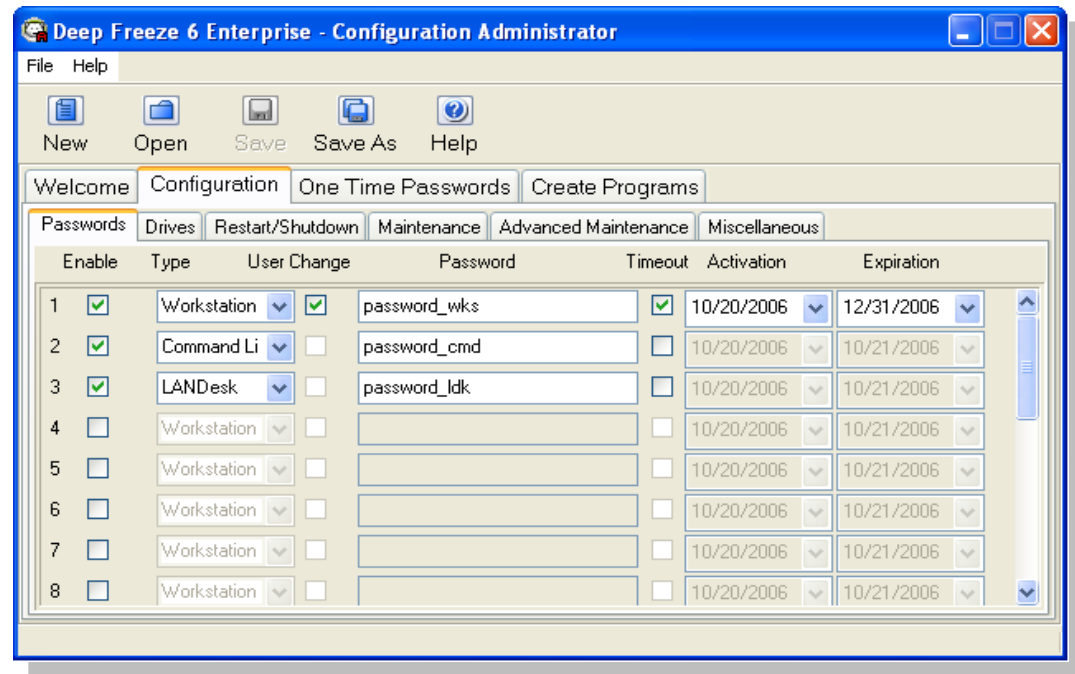
- Configuration Administrator
- Enterprise Console
- Workstation Installation Files
- Workstation Seed
- Server Service Manager
- Command Line Control tool (DFC)

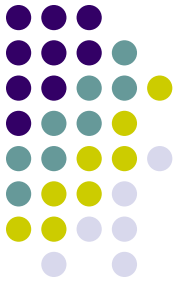




Password Management

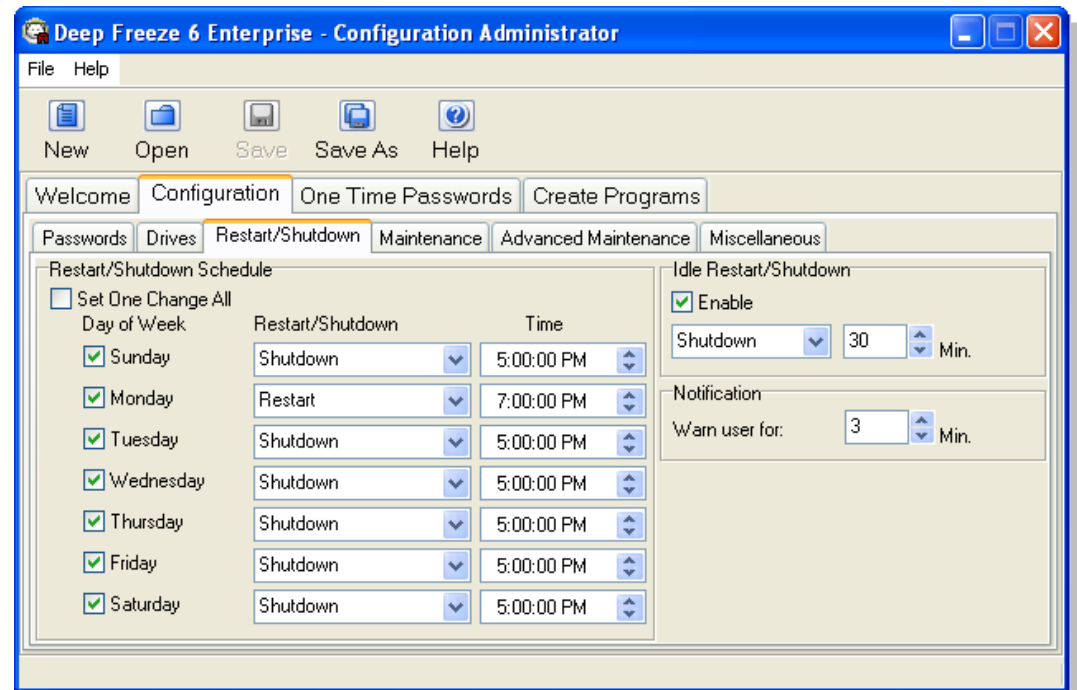
- Only Deep Freeze provides such a powerful level of password management.
- Deep Freeze provides One Time Passwords which allow temporary and secure access to single protected workstations.





Power Savings

- IT will turn them off everyday & leave them on when required to do updates.
- Delta and Vancouver school districts in BC, Canada, reduced electricity use by over 2,974,280 kilowatt hours a year, worth \$179,000 in annual cost savings.
- Shutting down computers also reduces the amount of heat produced, decreasing the schools' cooling loads.
Full case study: BC Hydro Case Study
- Force a reboot every day to provide new users with the standard system configuration

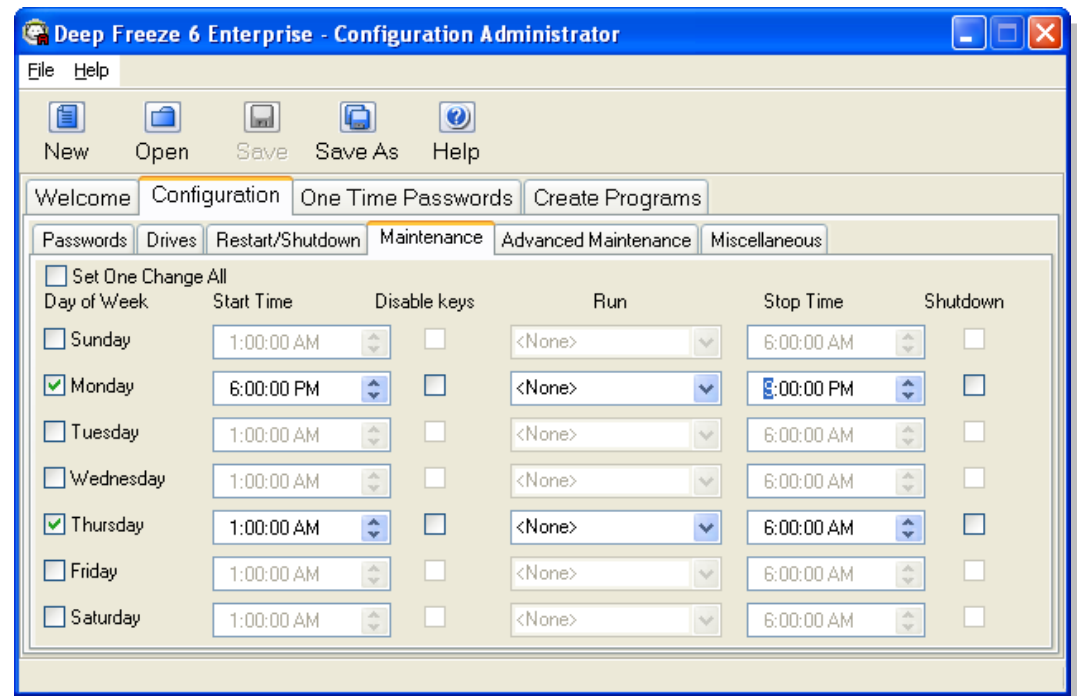




Managing Changes

Maintenance Schedule

- Specify a maintenance time where permanent updates can take place.
- Includes anti-virus, third party software and Windows critical updates
- Run customized batch files
- Disable the keyboard and mouse while workstations are in maintenance mode

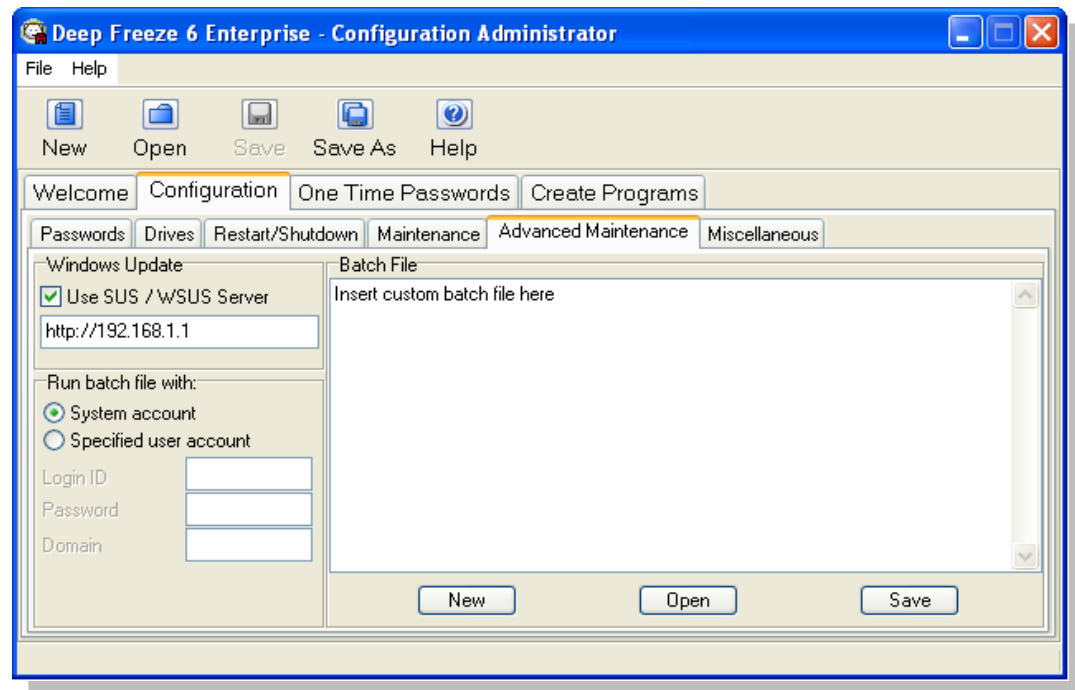




Product Configuration

Advanced Maintenance

- ❖ Specify an internal SUS (Software Update Services) server for automatic Windows updates
- ❖ Load/Enter customized batch files for any maintenance task
- ❖ Run batch files with default local system privileges, or an account with network privileges

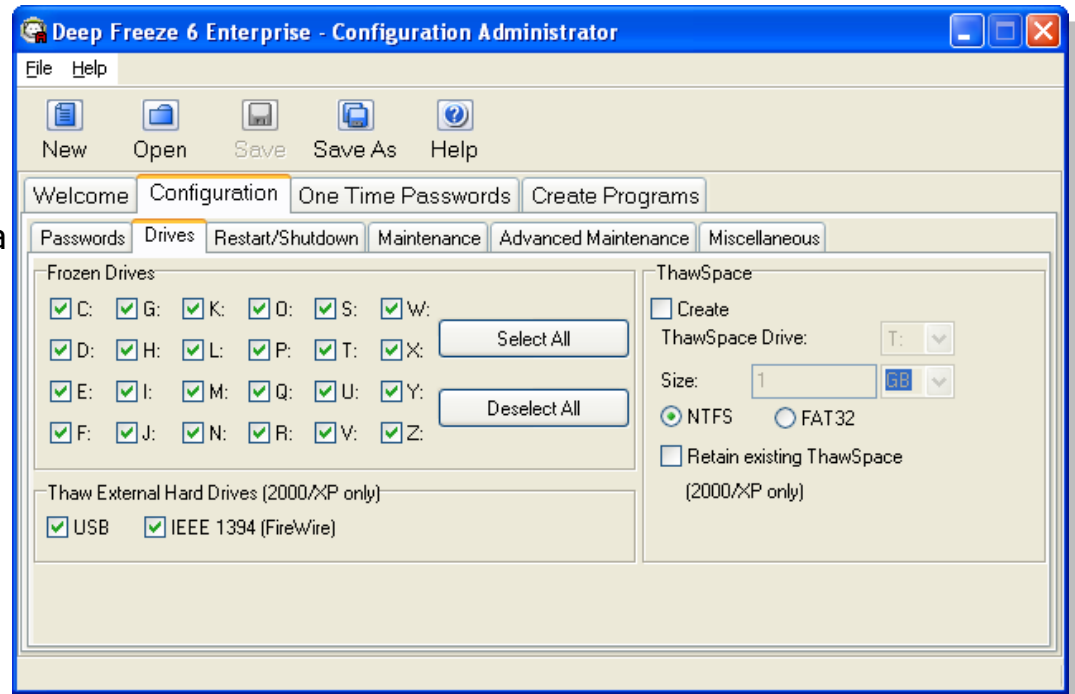


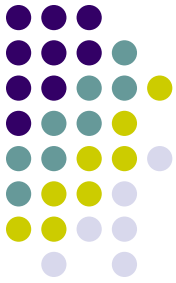


Product Configuration

ThawSpace

- To save large files (video production or CAD) locally you can employ the use of the ThawSpace to save files between reboots
- At times when the network is down or network storage is unavailable, ThawSpace can be used to save data permanently

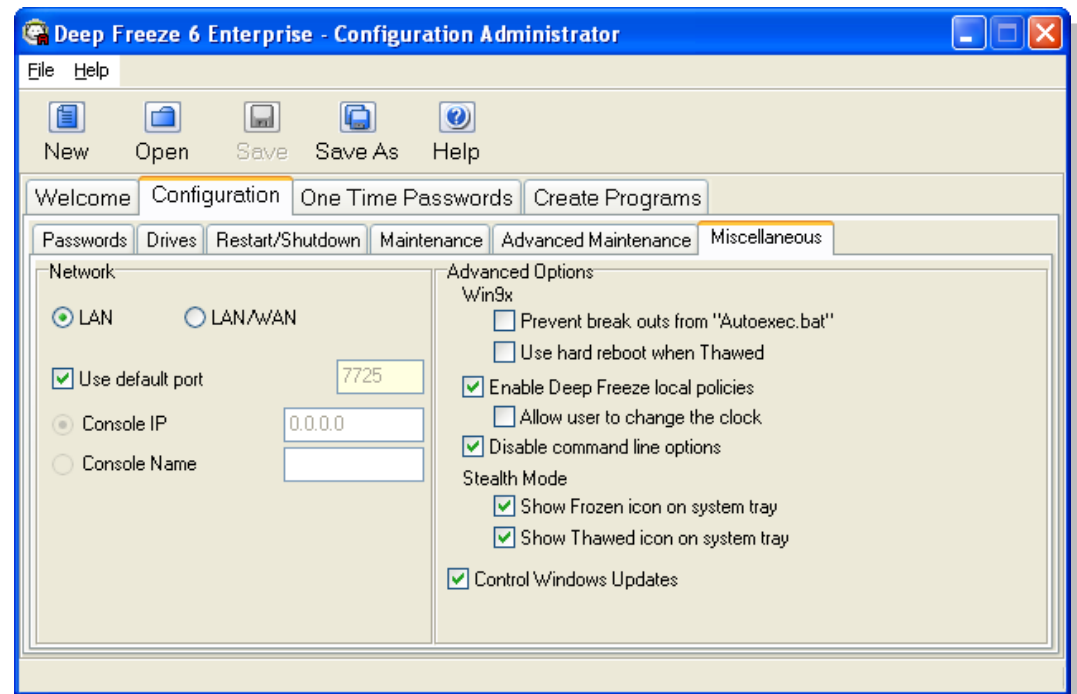


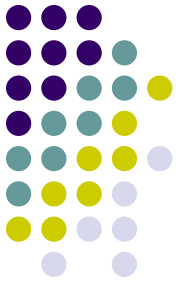


Product Configuration

Network

- Select the communication protocol between the Enterprise Console and the workstations
- LAN (one subnet)
- LAN / WAN (used in complex topography, for remote control via the internet)





Installation Programs

Create Programs

- Create and distribute the pre-configured programs
- The number of configurations is unlimited
- The Seed (communication client) is not subject to license)

